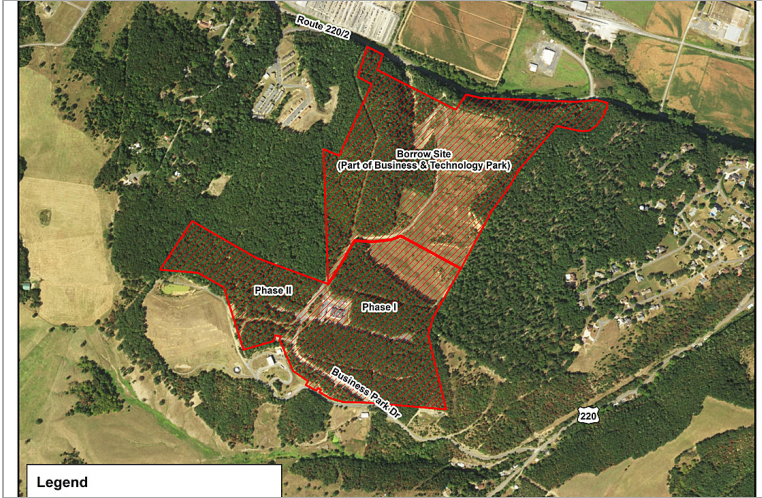


Grant County Business and Technology Park

County Road 220/2, Petersburg, West Virginia 26847 - Grant County



Availability

For Sale: Yes

Sale Price: \$25,000 per acre (Negotiable)

Site Details

Located in City Limits: No

Total Acres: 154

Available Acres for Development in Industrial/Business Park: 150

Maximum Contiguous Available Acres for Development in Industrial/Business Park: 21 acres

Divisible: Yes

Tax District: Milroy

Tax Map and Parcel Numbers: Map 448, Parcel 33 and 34.5 and Map 449

Property Details

Type of space:

Min Size: 0.82 acres

Max Size: 150 acres

Last Updated: 3/2/2020

Economic Development Contact

Company: West Virginia Development Office

Contact Name: Jim Linsenmeyer

City: Martinsburg

State: West Virginia

Cell: 304-382-3349

Email: James.F.Linsenmeyer@wv.gov

Property Contact

Name: Tammy Kitzmiller, Executive Director

Company: Grant County Development Authority

Address: PO Box 114

City: Petersburg

State: WV

Zip: 26847

Office Phone: (304) 257-2168

Fax: (304) 257-5454

Email: tkitzmiller@grantcounty-wv.com

Transportation

Nearest Highway: Corridor H

Distance to Major Highway: 13 miles

Nearest Commercial Airport: North Central West Virginia Airport

Distance to Airport: 95 miles

Access to Rail Service: Yes

Rail Provider: South Branch Railroad (WV Railroad Authority)

Utilities

Electric Service Provider: Potomac Edison

Voltage: 4 kV

Natural Gas Service Provider: None, propane gas is available

Water Service Provider: Grant County Public Service District

Water Line Size: 8 in

Static Water Pressure: 40 psi

Residual Water Pressure: 40 psi

Sewer Service Provider: City of Petersburg

Excess Sewer Capacity: Petersburg West

Fiber Available in the Area: Yes

Cable Available in the Area: Yes

DSL Available in the Area: Yes

Environmental Studies

Located outside of the 100 Year Floodplain: Yes