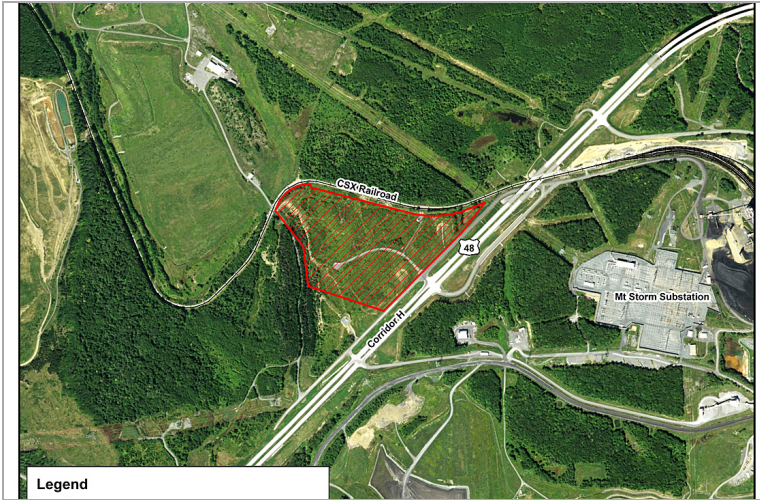


Mountain Top Industrial Park

WV 93, Mount Storm, West Virginia 26739 - Grant County



Availability

For Sale: Yes
Sale Price: \$15,000 per acre (Negotiable)
Sale Terms: Negotiable
For Lease: Yes
Lease Terms: Negotiable
Date Property Available: Immediately

Site Details

Located in City Limits: No
Total Acres: 160
Available Acres for Development in Industrial/Business Park: 44
Maximum Contiguous Available Acres for Development in Industrial/Business Park: 44 acres
Divisible: Yes

Utilities

Electric Service Provider: Mon Power
Voltage: 120/208, 400 Amp.
Natural Gas Service Provider: None-Propane gas is available
Water Service Provider: Mountain Top PSD
Water Line Size: 6 in
Sewer Service Provider: Individual on-site treatment/centralized collection & treatment available
Excess Sewer Capacity: Mt Storm Lake
DSL Available in the Area: Yes

Environmental Studies

Located outside of the 100 Year Floodplain: Yes

Property Details

Type of space:
Min Size: 44 acres
Max Size: 44 acres
Last Updated: 3/2/2020

Economic Development Contact

Company: West Virginia Development Office
Contact Name: Jim Linsenmeyer
City: Martinsburg
State: West Virginia
Cell: 304-382-3349
Email: James.F.Linsenmeyer@wv.gov

Property Contact

Name: Tammy Kitzmiller, Executive Director
Company: Grant County Development Authority
Address: PO Box 114
City: Petersburg
State: WV
Zip: 26847
Office Phone: (304) 257-2168
Fax: (304) 257-5454
Email: tkitzmiller@grantcounty-wv.com

Transportation

Nearest Highway: Corridor H
Distance to Major Highway: 0.01 miles
Nearest Interstate: I-68
Distance to Interstate: 29 miles
Interstate Exit: 42
Nearest Commercial Airport: North Central West Virginia Airport
Distance to Airport: 69 miles