

NOW AVAILABLE FOR LEASE

STATE-OF-THE-ART DATA CENTER

Grant County Data Center, Petersburg, West Virginia



Grant County Development Authority
Tammy Kitzmiller, Executive Director
Phone: 304.257.2168 Email: gcda@grantcounty-wv.com

Grant County Data
Center
Petersburg, West Virginia

[SUMMARY](#)

[OVERVIEW](#)

[POWER](#)

[HAZARD AVOIDANCE](#)

[FLOOR PLAN](#)

[LOCATION](#)

[FIBER MAP](#)

[REGIONAL PROFILE](#)

[CONTACT](#)



The **Grant County Data Center** is located in Petersburg, West Virginia in the Eastern Panhandle and Potomac Highlands region.

This **new** data center was designed and purpose-built by the Grant County Development Authority within the Grant County Business & Technology Park in an effort to spur additional technology investment in the region. The building is now completed and recently became available for lease.

The Grant County Data Center offers a “Ready-To-Occupy” facility complete with infrastructure, generator, raised floor, multiple fiber connections and abundant power.



This secured facility is equipped with a state-of-the-art security system, secure entrance, monitoring system, and fenced equipment yard designed to provide the utmost protection.

A detailed overview of this facility, location, and impressive benefits follow in the subsequent pages.



Location:	155 Technology Lane Grant County Business & Technology Park Petersburg, West Virginia
Use:	Purpose-built data center ideal for colocation, hosting, disaster recovery
Building:	10,200 SF, Single-Level, Free Standing Purpose-Build Data Center; Pre-cast Concrete Construction
Power:	Potomac Edison, subsidiary of First Energy, offers robust and scalable power. Potomac Edison serves residential and commercial customers in Maryland and the Eastern Panhandle of West Virginia. First Energy serves 6M customers and has nearly 17,000 MW of generating capacity.
Fiber:	Shentel (Shenandoah Telecommunications), Frontier Communications, and HardyNet offer fiber availability. Shentel offers high speed dark and retail fiber to Northern Virginia, DC, Baltimore and other regional cities.
Water:	Public City Water Supply
Fire-Protection:	Pre-Action, Double-Interlock Dry Pipe Suppression
Raised Floor:	Two (2) Foot Raised Floor throughout data center section
Market:	Ideal secure location with proximity to the Northern Virginia data center market, Richmond, Washington DC, Pittsburgh and Baltimore offering dark and retail high-speed fiber connectivity.

Generator:

Cummins 1,250 kW generator with fuel storage tank; Due to the 911 operations in a portion of the facility, fuel storage refill on high priority with redundant service providers.

Security:

Keri Systems Access Control & Multi-Point Monitored Security System

Power Systems:

Internally redundant UPS System

Roof:

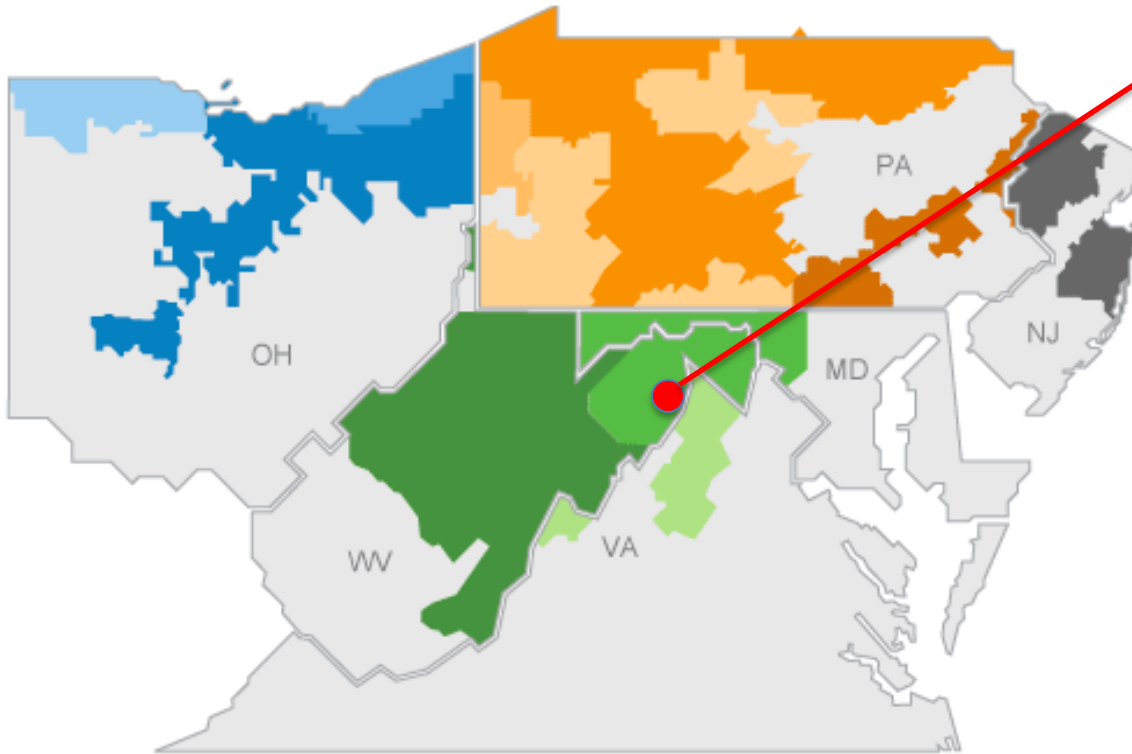
New mechanically fastened/adhered EPDM roof system with lightning protection and ground resistance.

Mechanical:

Six (6) independent 30 tons each CRAC units



First Energy Service Area



The Grant County Data Center is located in the heart of First Energy's Service area offering abundant power via its subsidiary Potomac Edison.

First Energy is completing a \$4.2 B investment in upgrading and strengthening its grid across its transmission territory.

First Energy's service area offers nearly 17,000 MW of transmission and, this year, expects a 25% reduction below 2005 carbon dioxide levels.

Ohio

- Ohio Edison
- The Illuminating Company
- Toledo Edison

Pennsylvania

- Met-Ed
- Penelec
- Penn Power
- West Penn Power

New Jersey

- Jersey Central Power & Light

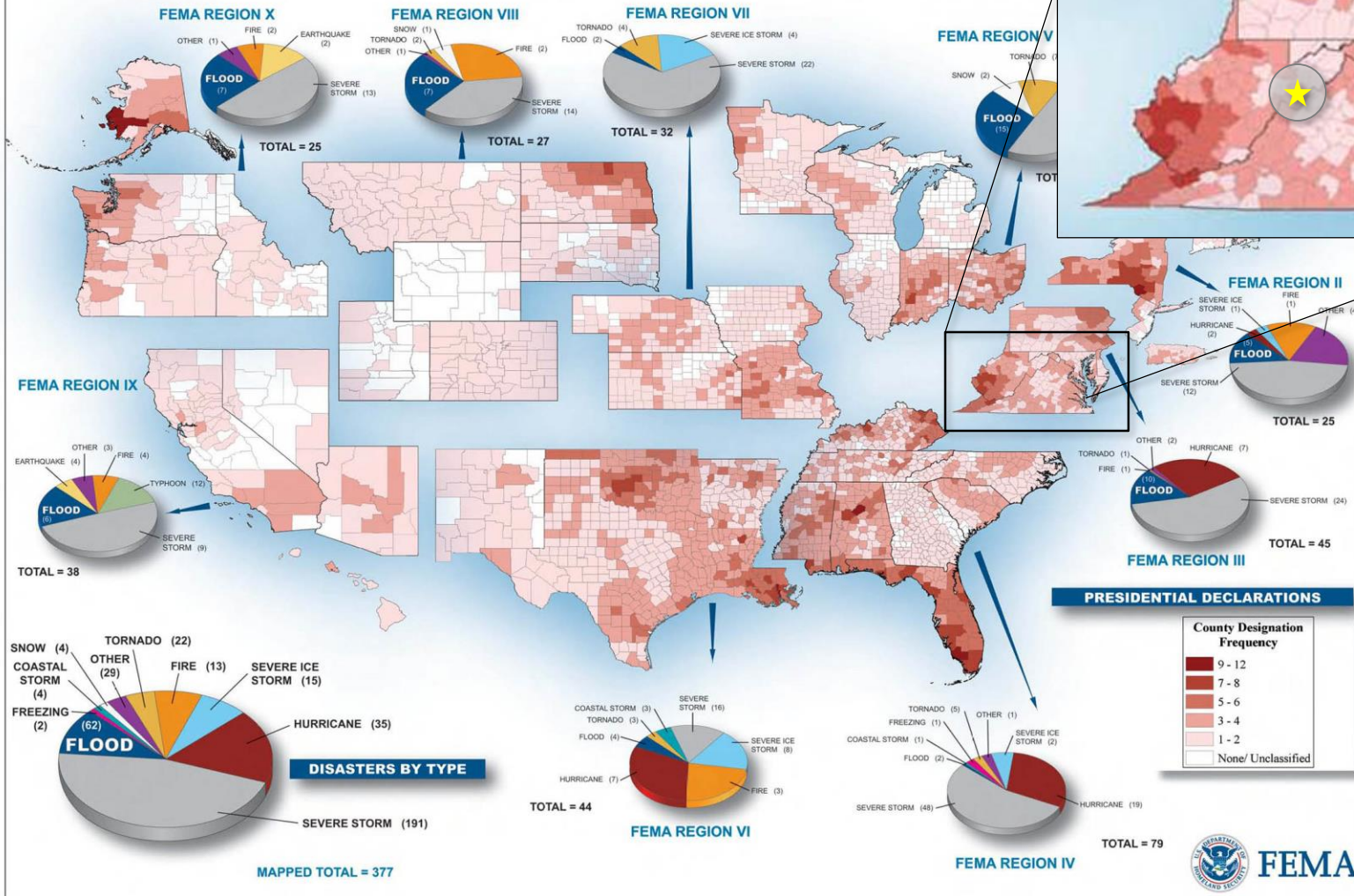
West Virginia/ Maryland

- Mon Power
- Potomac Edison

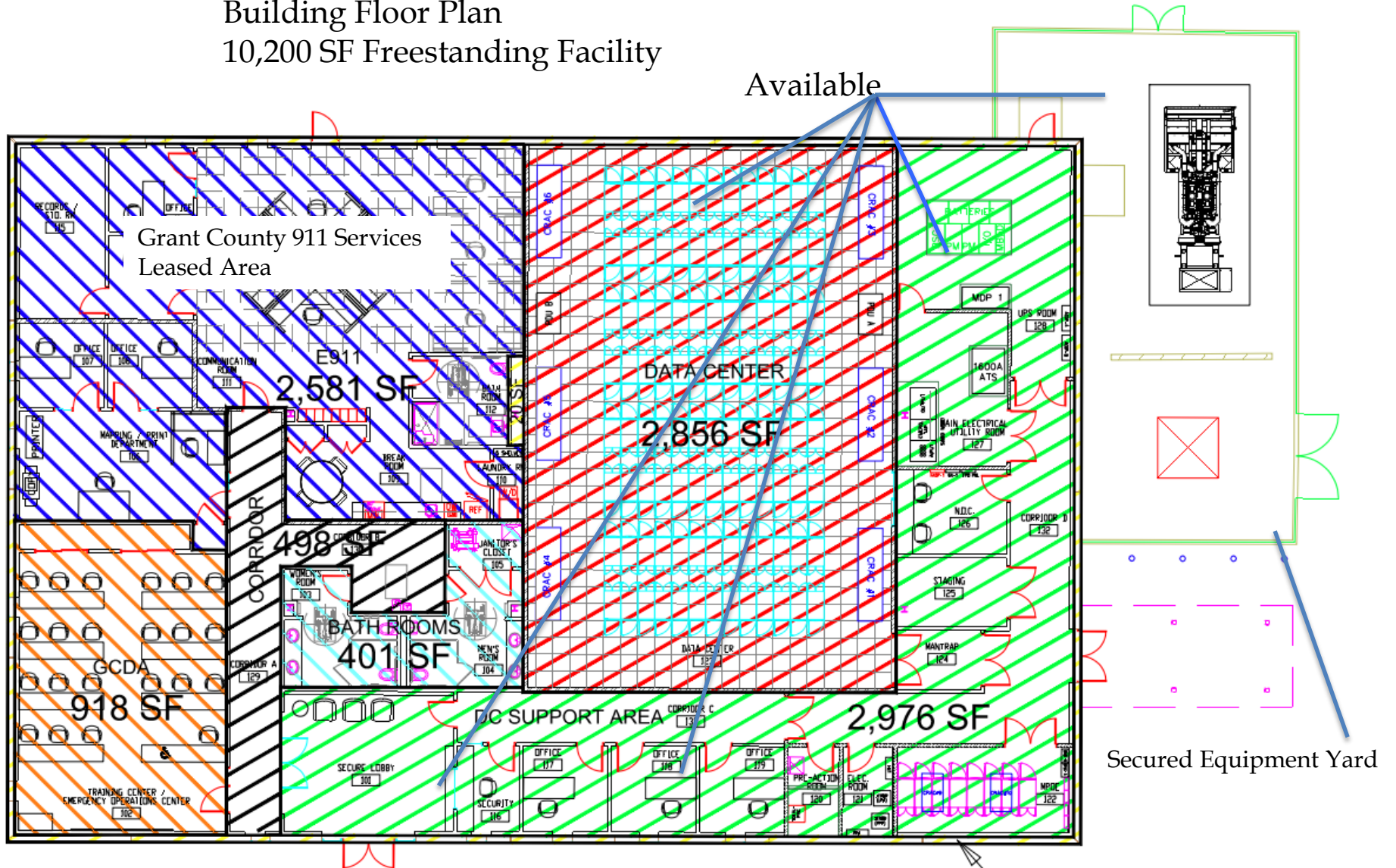
Potomac Edison[™]
A FirstEnergy Company

PRESIDENTIAL DISASTER DECLARATIONS

January 3, 2000 to March 3, 2007



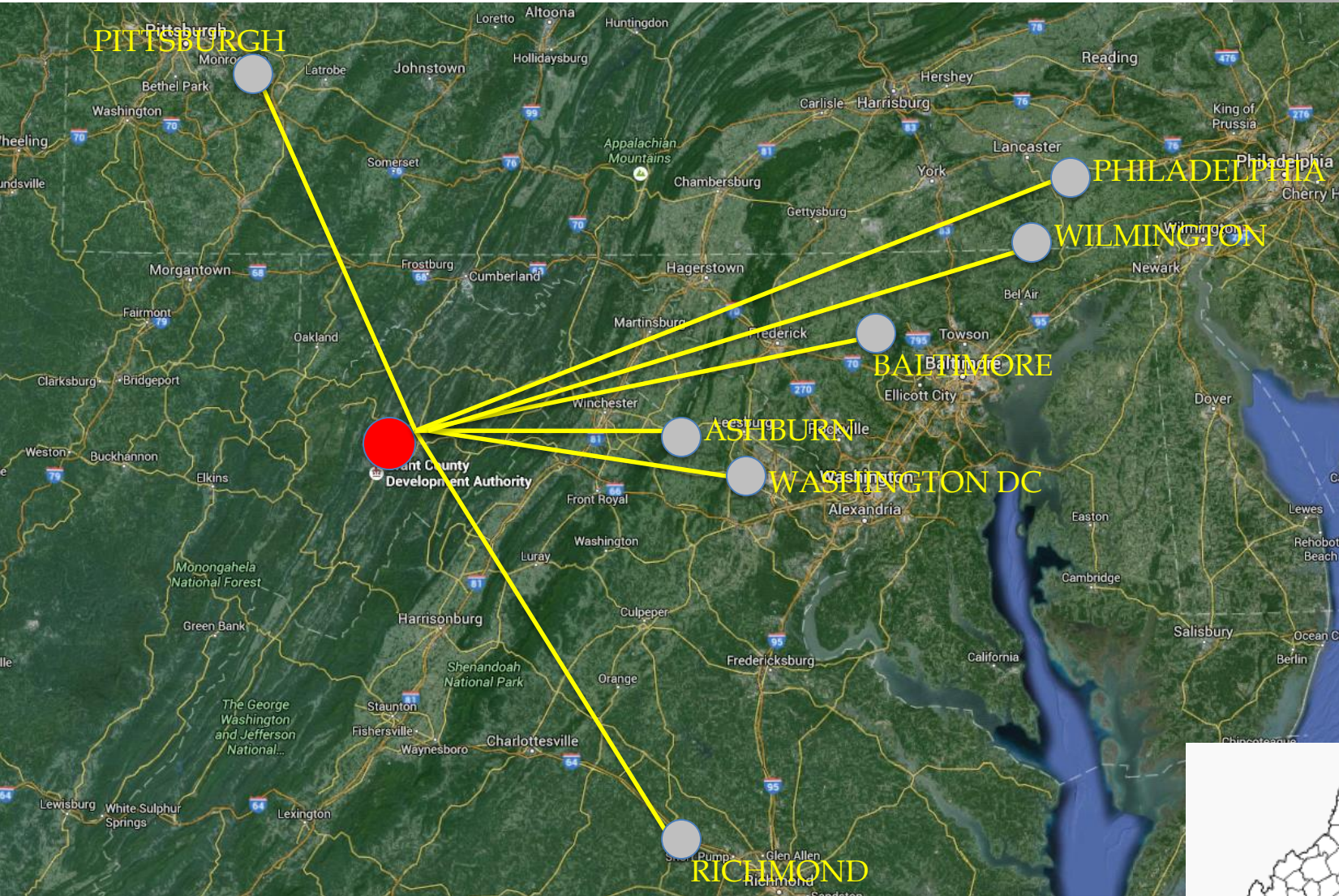
Building Floor Plan 10,200 SF Freestanding Facility



Data Center: 2,856 SF DC Support Areas: 2,976 SF Common/Shared Areas: 899 SF

LOCATION

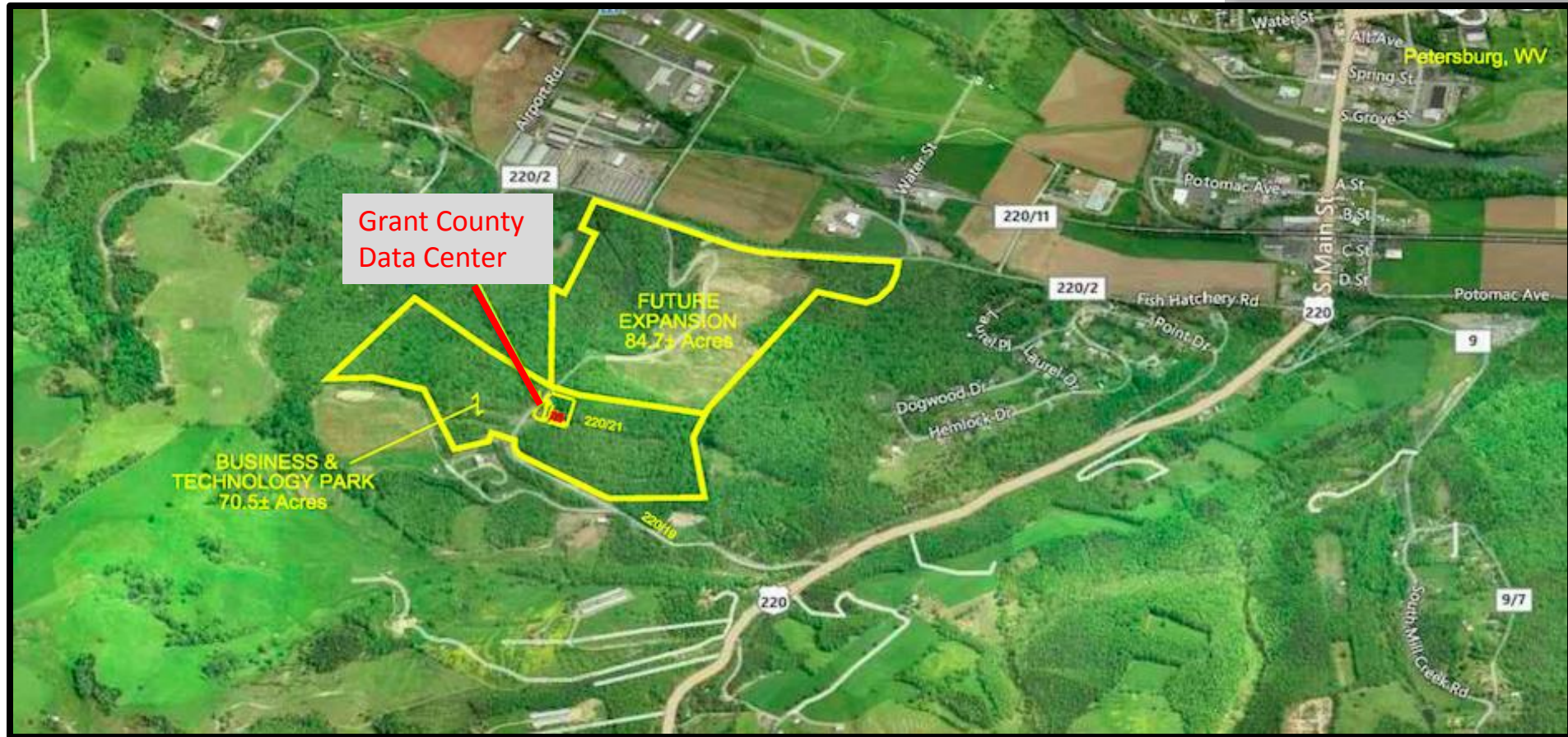
Grant County Data Center, Petersburg, West Virginia



Excellent Regional Proximity
In The Middle of Everywhere

LOCATION

Grant County Data Center, Petersburg, West Virginia



The Grant County Data Center is situated on nearly 2 acres with over 150 acres of contiguous expansion capacity in the Grant County Business & Technology Park. Easy and immediate access to US 220 and close proximity to Corridor H of the Appalachian Development Highway System (US Route 48). The facility is also in proximity to I-81 offering accessibility and, simultaneously, a private and secure location for use as a disaster recovery, hosting, storage and related data center uses.

Access to US 220 and US Route 48 and proximity to Interstate 81. Regional access to Ashburn, Washington DC, Baltimore, Pittsburgh and Richmond



Grant County Data Center

ASHBURN
WASHINGTON DC



Shentel (Shenandoah Telecommunications Co) offers wireless, high-speed fiber, and cable services in Virginia, West Virginia, central Pennsylvania and western Maryland.

Location

The Grant County Data Center is located Petersburg, West Virginia in the Panhandle area of the state offering regional proximity to Northern Virginia, Baltimore, Washington DC, Pittsburgh and Richmond. The data center is located at US 220 with access to I-81.

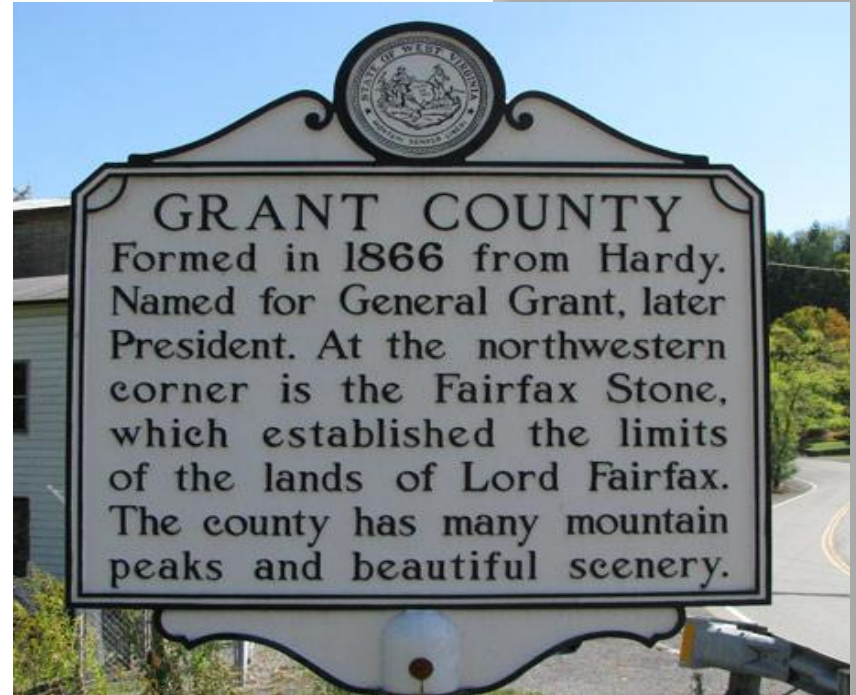
Regional Data Center Cluster

With proximity to the Northern Virginia data center cluster, the Grant County Data Center offers accessibility to one of the most robust data center regions in North America. Northern Virginia is home to the largest concentration of data centers on the East Coast.

Data center companies with a presence in Northern Virginia include Digital Realty Trust, Dupont Fabros, Equinix, Raging Wire, Facebook, Yahoo, Coresite, Zayo, Google, Centurylink, and many others.

Proximity Opportunity

The Grant County Data Center offers companies the ability to house off-site disaster recovery, data storage, hosting and other data center functions outside of the Washington DC "Blast Zone" creating a secure and accessible off-site location. Multiple fiber providers with dark and retail offerings to the Northern Virginia area offer redundancy and high-speed offerings.



Low Natural Disaster Risks

Grant County is located in an area known for its low risk of natural disasters. Additionally, the area offers an equitable climate with moderate year-round temperatures and the benefit of free-cooling.

Incentives

Grant County has the ability to offer incentives for companies to take advantage of potential tax credits and discretionary programs pending the use, additional investment and employment considerations.



NOW AVAILABLE FOR LEASE

STATE-OF-THE-ART DATA CENTER

Grant County Data Center

Petersburg, West Virginia

FOR MORE INFORMATION:

Grant County Development Authority

Tammy Kitzmiller, Executive Director

Phone: 304.257.2168 Email: gcda@grantcounty-wv.com



